

B. Rourke & Co. Ltd.

Member of NOMMA

Wrought Ironsmiths of Distinction

Directors: B. Rourke, E. M. Rourke, R. J. Twiddy, M. A. Rourke
Registered in England. No. 1151730
VAT Reg. No. GB 175 4072 62



SAFETY DATA SHEET

HI-BUILD VINYL
(General colours)

Version 4.02 2003,25 April

1. PRODUCT AND COMPANY IDENTIFICATION

1.01 Product Code VY/GENERAL
1.02 Product Name HI-BUILD VINYL
1.03 Synonyms (General colours)
1.04 Intended Use A solvent borne paint for industrial finishing.
Application may be by spray or special processes.

2. COMPOSITION/INFORMATION ON INGREDIENTS

2.01 General Information The hydrocarbon solvents used in this product contain less than 0.1% (w/w) of BENZENE.

2.02 Substances presenting a health hazard within the meaning of the CHIP Regulations or assigned occupational exposure limits.

Name	% Conc.	EC No.	Symbol	R-Phrases
(CAS 013330-20-7) XYLENE	25 - 50	202-422-2	Xn	R10 R20/21 R38
(CAS 064742-95-6) SOLVENT NAPHTHA (PETROLEUM), LIGHT AROMATICS	2.5 - 10	265-199-0	Xn N	R10 R51/53 R66 R67
(CAS 000100-41-4) ETHYLBENZENE	2.5 - 10	202-849-4	F Xn	R11 R20
(CAS 000123-86-4) n-BUTYL ACETATE	2.5 - 10	204-658-1		R10 R66 R67
(CAS 000108-65-6) 2-METHOXY-1-METHYLETHYL ACETATE	2.5 - 10	203-603-9	Xi	R10 R36
(CAS 000095-63-6) 1,2,4-TRIMETHYLBENZENE	2.5 - 10	202-436-9	N	R10 R20 R36/37/38 R51/53
(CAS 000108-67-8) MESITYLENE	1.0 - 2.5	203-604-4	Xi N	R10 R37 R51/53
(CAS 000098-82-8) CUMENE	0.5 - 1.0	202-704-5	Xi N	R10 R37 R51/53 R65
(CAS 068308-64-5) QUATERNARY AMMONIUM ETHOSULPHATE	0.1 - 0.5	269-662-8	C N	R34 R22 R50

2.03 R-Phrases used

R10 FLAMMABLE.
R11 HIGHLY FLAMMABLE.
R20 HARMFUL BY INHALATION.

Showrooms, Offices and Factory at:

Vulcan Works
Accrington Road
Burnley BB11 5QD

Tel: (+44) 01282 422841

Fax: (+44) 01282 458901 (Trade sales) or (+44) 01282 450043 (General & Estimating)
e-mail: info@rourkes.co.uk web site: www.rourkes.co.uk

SAFETY DATA SHEET

HI-BUILD VINYL
(General colours)

Version 4.02 2003,25 April

1. PRODUCT AND COMPANY IDENTIFICATION

1.01 Product Code	VY/GENERAL
1.02 Product Name	HI-BUILD VINYL
1.03 Synonyms	
1.04 Intended Use	(General colours) A solvent borne paint for industrial finishing. Application may be by spray or special processes.
1.05 Manufacturer/Supplier	Shipley Paint Ltd.
1.06 Address	Otley Road Shipley Bradford West Yorkshire BD17 7DP
1.07 Contact	Chief Chemist
1.08 Phone Number	01274-587351
1.09 Fax Number	01274-531360
1.10 Emergency Phone Number	01274-587351

2. COMPOSITION/INFORMATION ON INGREDIENTS

2.01 General Information The hydrocarbon solvents used in this product contain less than 0.1% (w/w) of BENZENE.

2.02 Substances presenting a health hazard within the meaning of the CHIP Regulations or assigned occupational exposure limits.

Name	% Conc.	EC No.	Symbol	R-Phrases
(CAS 013330-20-7) XYLENE	25 - 50	202-422-2	Xn	R10 R20/21 R38
(CAS 064742-95-6) SOLVENT NAPHTHA (PETROLEUM), LIGHT AROMATICS	2.5 - 10	265-199-0	Xn N	R10 R51/53 R66 R67
(CAS 000100-41-4) ETHYLBENZENE	2.5 - 10	202-849-4	F Xn	R11 R20
(CAS 000123-86-4) n-BUTYL ACETATE	2.5 - 10	204-658-1		R10 R66 R67
(CAS 000108-65-6) 2-METHOXY-1-METHYLETHYL ACETATE	2.5 - 10	203-603-9	Xi	R10 R36
(CAS 000095-63-6) 1,2,4-TRIMETHYLBENZENE	2.5 - 10	202-436-9	N	R10 R20 R36/37/38 R51/53
(CAS 000108-67-8) MESITYLENE	1.0 - 2.5	203-604-4	Xi N	R10 R37 R51/53
(CAS 000098-82-8) CUMENE	0.5 - 1.0	202-704-5	Xi N	R10 R37 R51/53 R65
(CAS 068308-64-5) QUATERNARY AMMONIUM ETHOSULPHATE	0.1 - 0.5	269-662-8	C N	R34 R22 R50

2.03 R-Phrases used

R10	FLAMMABLE.
R11	HIGHLY FLAMMABLE.
R20	HARMFUL BY INHALATION.

COMPOSITION/INFORMATION ON INGREDIENTS (continued)

R20/21	HARMFUL BY INHALATION AND IN CONTACT WITH SKIN.
R22	HARMFUL IF SWALLOWED.
R34	CAUSES BURNS.
R36	IRRITATING TO EYES.
R36/37/38	IRRITATING TO EYES, RESPIRATORY SYSTEM AND SKIN
R37	IRRITATING TO RESPIRATORY SYSTEM.
R38	IRRITATING TO SKIN.
R50	VERY TOXIC TO AQUATIC ORGANISMS.
R51/53	TOXIC TO AQUATIC ORGANISMS; MAY CAUSE LONG-TERM ADVERSE EFFECTS IN THE AQUATIC ENVIRONMENT.
R65	HARMFUL: MAY CAUSE LUNG DAMAGE IF SWALLOWED.
R66	REPEATED EXPOSURE MAY CAUSE SKIN DRYNESS OR CRACKING.
R67	VAPOURS MAY CAUSE DROWSINESS AND DIZZINESS.

HAZARD IDENTIFICATION

3.01 Main Hazards	The product has been assigned the following indications of danger: FLAMMABLE & HARMFUL
3.02 Health Effects - Skin	HARMFUL AND IRRITATING TO THE SKIN.
3.03 Health Effects - Inhalation	HARMFUL BY INHALATION.
3.04 General Information	HARMFUL TO AQUATIC ORGANISMS, MAY CAUSE LONG-TERM ADVERSE EFFECTS IN THE AQUATIC ENVIRONMENT.

4. FIRST AID MEASURES

4.01 General	In all cases of doubt, or when symptoms persist, seek medical attention. Never give anything by mouth to an unconscious person.
4.02 First Aid - Eyes	Remove contact lenses. Irrigate copiously with clean, fresh water for at least 10 minutes holding the eyelids apart, and seek medical advice.
4.03 First Aid - Skin	Remove contaminated clothing. Wash skin thoroughly with soap and water or use proprietary skin cleaner. Do NOT use solvents or thinners.
4.04 First Aid - Ingestion	If accidentally swallowed obtain immediate medical attention. Keep at rest. Do NOT induce vomiting.
4.05 First Aid - Inhalation	Remove to fresh air, keep the patient warm and at rest. If breathing has stopped, administer artificial respiration. Give nothing by mouth. If unconscious, place in the recovery position and seek medical help.

FIRE FIGHTING MEASURES

5.01 Extinguishing Media	Alcohol resistant foam, carbon dioxide, powder, water spray/mist.
5.02 Unsuitable Extinguishing Media	Water jet.
5.03 Special Hazards	Fire will produce dense black smoke containing hazardous products of combustion. (See Section 10)
5.04 Protective Equipment	Appropriate self-contained breathing apparatus may be required.
5.05 Combustion Products	Exposure to decomposition products may be a hazard to health.
5.06 Recommendations	Cool closed containers exposed to fire with water spray. Do not allow run-off from fire fighting to enter drains or water courses.

6. ACCIDENTAL RELEASE MEASURES

- 6.01 Personal precautions Avoid breathing vapours. Refer to the protective measures listed in Sections 7 and 8.
- 6.02 Environmental precautions Do not allow to enter drains or water courses. If the product enters drains or sewers, the local water company should be contacted immediately; in the case of contamination of streams, rivers or lakes, the relevant environment agency.
- 6.03 Large spillages/disposal Contain and collect spillages with absorbent material which is non-combustible, e.g. sand, earth vermiculite, diatomaceous earth and place in a suitable container for disposal in accordance with the waste regulations. (See Section 13).
- Clean preferably with a detergent, avoid the use of solvents.
- 6.04 General information Exclude sources of ignition and ventilate the area, also exclude non-essential personnel.

HANDLING & STORAGE

- 7.01 Handling
- Vapours are heavier than air and may spread along floors. They may form explosive mixtures with air. Prevent the creation of flammable or explosive concentrations of vapour in air and avoid vapour concentrations higher than the occupational Exposure Limit Values.
- In addition, the product should only be used in areas from which all naked lights and other sources of ignition have been excluded. Electrical equipment should be protected to the appropriate standard.
- The product may charge electrostatically. Always use earthing leads when transferring from one container to the other. Operators should wear anti-static footwear and clothing. Floors should be electrically conductive.
- Keep container tightly closed. Exclude sources of heat, sparks and open flame. Non-sparking tools should be used.
- Avoid skin and eye contact. Avoid the inhalation of vapour and mist.
- Smoking, eating and drinking should be prohibited in storage and use areas.
- For Occupational Exposure Control measures see Section 8.
- Never use pressure to empty: The container is not a pressure vessel. Always keep in containers made of the same material as the supply container.
- The accumulation of contaminated rags may result in spontaneous combustion. Good housekeeping standards and regular safe removal of waste materials will minimise the risks of spontaneous combustion and other fire hazards.
- The Manual Handling Operations Regulations may apply to the handling of containers of products. To assist in calculating the weight of the pack, the pack size in litres can be multiplied by the density given in Section 9. This will give the nett weight of the product in kilograms. Packaging allowance will be needed to estimate gross weight.
- 7.02 Storage
- Observe the label precautions. Store between 5 C and 25 C in a dry, well ventilated place away from sources of heat, ignition and direct sunlight.
- No smoking. Prevent unauthorised access.
- Containers which are opened should be properly resealed and kept upright to prevent leakage.
- The storage and use of this product is subject to the requirements of the Dangerous Substances and Explosive Atmospheres Regulations. Small quantities (up to 50 litres) of flammable liquids in closed containers can be kept within the work room in a suitably placed cupboard or bin which is of fire-resisting structure and is designed to

HANDLING & STORAGE (continued)

retain spills. Material that is not in use should be returned to the designated storage area. Further guidance is contained in the HSE guidance note, Storage of Flammable Liquids in Containers. The principles contained in the HSE guidance note Storage of Packed Dangerous Substances, should be observed when storing this product. Store separately from oxidising agents and strongly alkaline and strongly acidic materials.

EXPOSURE CONTROLS/PERSONAL PROTECTION

8.01 Occupational exposure standards

Substance	OES	Occupational Exposure Limits 8 Hr. TWA		Occupational Exposure Limits 15 Min. STEL		Note
		ppm	mg/cu. m	ppm	mg/cu. m	
XYLENE	OES	50.00	220.00	100.00	441.00	Sk
SOLVENT NAPHTHA (PETROLEUM), LIGHT AROMATICS	OES	25.00	120.00			SUP
ETHYLBENZENE	OES	100.00	441.00	125.00	552.00	Sk
n-BUTYL ACETATE	OES	150.00	724.00	200.00	966.00	
2-METHOXY-1-METHYLETHYL ACETATE	OES	50.00	274.00	100.00	548.00	Sk
1,2,4-TRIMETHYLBENZENE	OES	25.00	125.00			
MESITYLENE	OES	25.00	125.00			
CUMENE	OES	25.00	125.00	50.00	250.00	Sk
QUATERNARY AMMONIUM ETHOSULPHATE		* * * * * No Data * * * * *				

8.02 General Information

Notes:

- (1) TWA is the Long Term Exposure Limit based on an 8 hour Time Weighted Average period.
- (2) STEL is the Short Term Exposure Limit of 15 minutes.
- (3) "Sk" indicates a risk of exposure through the skin. "Sen" indicates a respiratory sensitiser "CHAN" indicates an OEL which should be treated as if it were an MEL.
- (4) OES indicates Occupational Exposure Standard; MEL indicates a Maximum Exposure Limit. OEL's are taken from the current version of EH40, except those marked 'SUP' which are assigned by the supplier of the substance. For sprayed products the 8 hour TWA's are:-
RESPIRABLE PARTICULATES 5 mg/cu.m (OEL)
TOTAL INHALABLE PARTICULATES 10 mg/cu.m (OEL)

ENVIRONMENTAL EXPOSURE CONTROLS:

See Section 12 for detailed information.

8.03 Engineering control measures

Provide adequate ventilation. Where reasonably practical this should be achieved by the use of local exhaust ventilation and good general extraction. If these are not sufficient to maintain concentrations of particulates and/or solvent vapours below the relevant Exposure Limit Values, suitable respiratory equipment must be worn. (See Occupational Exposure Controls below.)

OCCUPATIONAL EXPOSURE CONTROLS:

All personal protective equipment, including respiratory protective equipment, used to control exposure to hazardous substances must be selected to meet the requirements of the COSHH Regulations.

8.04 Respiratory protection

Air-fed respiratory protective equipment should be worn when this product is sprayed if the exposure of the sprayer or other people nearby can not be controlled to below the occupational exposure limit and engineering controls and methods cannot reasonably be improved.

If exposure to hazardous substances identified above cannot be controlled by the provision of local exhaust ventilation and good general extraction, suitable respiratory protective

equipment should be worn. Air-fed respiratory protection should be used when painting in poorly ventilated or confined spaces.

Dry sanding, flame cutting and/or welding of the dry paint film will give rise to dust and/or hazardous fumes. Wet flatting should be used wherever possible. If exposure cannot be avoided by the provision of local exhaust ventilation, suitable respiratory equipment should be used.

8.05 Hand protection

When skin exposure may occur, advice should be sought from glove suppliers on appropriate types and usage times for this product. The instructions and information provided by the glove supplier on use, storage and maintenance and replacement must be followed.

Barrier creams may help to protect exposed areas of the skin but are not substitutes for full physical protection. They should not be applied once exposure has occurred.

8.06 Eye protection

Eye protection designed to protect against liquid splashes should be worn.

8.07 Body protection

Cotton or cotton/synthetic overalls or coveralls are normally suitable. Grossly contaminated clothing should be removed and the skin washed with soap and water or a proprietary skin cleaner.

Regular skin inspection of users of this product is recommended. ALWAYS WASH YOUR HANDS BEFORE EATING, SMOKING OR USING THE TOILET.

PHYSICAL & CHEMICAL PROPERTIES

9.01 Physical State	Viscous liquid
9.02 Colour	Various
9.03 Odour	Aromatic-ester
9.04 Boiling point/range degC	136-181
9.05 Flash point	23-31 C BS3900:A8
9.06 Lower Explosion Limit %	0.8
9.07 Solubility in water	Immiscible
9.08 Vapour pressure	0.2-1.3 kPa @ 20 C
9.09 Density or relative density	1.1-1.2
9.10 Flammability	Flammable
9.11 Auto-flammability	315 C
9.12 Viscosity	4-5 p @ 20 C (RT)
9.13 Vapour density (air=1)	Heavier than air
9.14 General Information	VOC is 570-600 gram/litre

10 STABILITY & REACTIVITY

10.01 Stability

Stable under the recommended storage and handling conditions. (See Section 7).

10.02 Conditions to avoid

Heat, sparks, flames and other ignition sources.

10.03 Materials to avoid

Keep away from oxidising agents and strongly acidic and strongly alkaline materials to prevent the possibility of exothermic reaction.

10.04 Hazardous decomposition

In a fire, hazardous decomposition products such as smoke, carbon monoxide, carbon dioxide and oxides of nitrogen may be produced.

TOXICOLOGICAL INFORMATION

11.01 Irritancy - skin

XYLENE may be absorbed through the skin with possible systemic damage.

11.02 General Information

There is no data on the product itself. The product has been assessed following the conventional method in CHIP and is classified for toxicological hazards accordingly. This takes account, where known, delayed and immediate effects and also chronic effects of components from short-term

2

11. TOXICOLOGICAL INFORMATION (continued)

and long-term exposure by oral, inhalation and dermal routes of exposure and eye contact. See Sections 3 and 15 for details of the resulting classification.

Exposure to organic solvent vapours in excess may result in adverse health effects, such as irritation of the mucous membrane and the respiratory system and adverse effects on kidney, liver and central nervous system. Symptoms and signs include headache, dizziness, fatigue, muscular weakness, drowsiness and in extreme cases, loss of consciousness.

Solvents may cause some of the above effects by absorption through the skin. Repeated or prolonged contact with the product may cause removal of natural fats from the skin, resulting in non-allergic contact dermatitis and absorption through the skin.

Splashes in the eyes may cause irritation and reversible local damage.

12. ECOLOGICAL INFORMATION

12.01 General Information

There is no data on the product itself.

The product has been assessed following the conventional method in CHIP and is not classified as dangerous for the environment, but contains substances so classified - Section 2 for details.

This product should not be allowed to enter drains or water courses, or be deposited where it can affect ground or surface waters.

The Air Pollution Control requirements of the regulations made under the Environmental Protection Act may apply to the use of this product. See also Sections 5, 6 and 13.

13. DISPOSAL

13.01 Product/Container Disposal

Do NOT allow into drains or water courses or dispose of where ground or surface waters may be affected.

Wastes, including empty containers, are controlled wastes and should be disposed of in accordance with the regulations made under the Control of Pollution Act and the Environmental Protection Act.

13.02 General Information

Using the information provided in this safety data sheet, advice should be obtained from the relevant environment agency whether the Special Waste Regulations apply.

14. TRANSPORT INFORMATION

14.01 General Information

VISCOUS FLAMMABLE LIQUID DEROGATION:

In pack sizes up to and including 30 litres, under the terms of 2.3.2.5, this product is not subject to the packaging, labelling and marking requirements of the IMDG Code, but both full documentation and placarding of cargo transport units is still required.

In pack sizes less than 450 litres, under the terms of 2.2.3.1.5, this product is not subject to the provisions of ADR.

Air transport to be in accordance with ICAO/IATA
(UN1263 PAINT Class 3 PG III)

TRANSPORT WITHIN THE USER'S PREMISES: Always

8. EXPOSURE CONTROLS/PERSONAL PROTECTION (continued)

equipment should be worn. Air-fed respiratory protection should be used when painting in poorly ventilated or confined spaces.

Dry sanding, flame cutting and/or welding of the dry paint film will give rise to dust and/or hazardous fumes. Wet flattening should be used wherever possible. If exposure cannot be avoided by the provision of local exhaust ventilation, suitable respiratory equipment should be used.

8.05 Hand protection

When skin exposure may occur, advice should be sought from glove suppliers on appropriate types and usage times for this product. The instructions and information provided by the glove supplier on use, storage and maintenance and replacement must be followed.

Barrier creams may help to protect exposed areas of the skin but are not substitutes for full physical protection. They should not be applied once exposure has occurred.

8.06 Eye protection

Eye protection designed to protect against liquid splashes should be worn.

8.07 Body protection

Cotton or cotton/synthetic overalls or coveralls are normally suitable. Grossly contaminated clothing should be removed and the skin washed with soap and water or a proprietary skin cleaner.

Regular skin inspection of users of this product is recommended. ALWAYS WASH YOUR HANDS BEFORE EATING, SMOKING OR USING THE TOILET.

9. PHYSICAL & CHEMICAL PROPERTIES

9.01 Physical State	Viscous liquid
9.02 Colour	Various
9.03 Odour	Aromatic-ester
9.04 Boiling point/range degC	136-181
9.05 Flash point	23-31 C BS3900:A8
9.06 Lower Explosion Limit %	0.8
9.07 Solubility in water	Immiscible
9.08 Vapour pressure	0.2-1.3 kPa @ 20 C
9.09 Density or relative density	1.1-1.2
9.10 Flammability	Flammable
9.11 Auto-flammability	315 C
9.12 Viscosity	4-5 p @ 20 C (RT)
9.13 Vapour density (air=1)	Heavier than air
9.14 General Information	VOC is 570-600 gram/litre

10. STABILITY & REACTIVITY

10.01 Stability	Stable under the recommended storage and handling conditions. (See Section 7).
10.02 Conditions to avoid	Heat, sparks, flames and other ignition sources.
10.03 Materials to avoid	Keep away from oxidising agents and strongly acidic and strongly alkaline materials to prevent the possibility of exothermic reaction.
10.04 Hazardous decomposition	In a fire, hazardous decomposition products such as smoke, carbon monoxide, carbon dioxide and oxides of nitrogen may be produced.

TOXICOLOGICAL INFORMATION

11.01 Irritancy - skin	XYLENE may be absorbed through the skin with possible systemic damage.
11.02 General Information	There is no data on the product itself. The product has been assessed following the conventional method in CHIP and is classified for toxicological hazards accordingly. This takes account, where known, of delayed and immediate effects and also chronic effects of components from short-term

TRANSPORT INFORMATION (continued)

transport in closed containers that are upright and secure. Ensure that persons transporting the product know what to do in the event of accident or spillage.

REGULATORY INFORMATION

15.01 General Information

The information contained in this safety data sheet does not constitute the users own assessment of workplace risks as required by other health and safety legislation.

The provisions of the Health and Safety at Work etc. Act and the Control of Substances Hazardous to Health Regulations apply to the use of this product at work.

The product is classified and labelled in accordance with the CHIP Regulations as follows:

	Flammable		Xn Harmful
15.02 EC Symbols	R10	R20/21/38	R52/53
15.03 R Phrases	S07/09	S23/38	S36/37
15.04 S Phrases	S43		
15.05 P Phrases	P01		

15.06 R-Phrases / S-Phrases used

P01

R10

R20/21/38

R52/53

S07/09

S23/38

S36/37

S43

Before use - refer to the safety data sheet.

FLAMMABLE.

HARMFUL BY INHALATION AND IN CONTACT WITH SKIN, ALSO IRRITATING TO THE SKIN.

HARMFUL TO AQUATIC ORGANISMS, MAY CAUSE LONG-TERM ADVERSE EFFECTS IN THE AQUATIC ENVIRONMENT.

Keep container tightly closed and in a well ventilated place.

Do not breathe spray. In case of insufficient ventilation wear suitable respiratory equipment.

Wear suitable protective clothing and gloves.

In case of fire use alcohol resistant foam, carbon dioxide, powder or water spray/mist.

16. OTHER INFORMATION

16.01 Uses and Restrictions

The product should not be used for purposes other than shown in Section 1 without first referring to the supplier and obtaining written handling instructions. As the specific conditions of use of the product are outside the suppliers control, the user is responsible for ensuring that the requirements of relevant legislation are complied with.

16.02 Revisions highlighted

CHIP 3: Environmental labelling.

16.03 General Information

The information contained in this safety data sheet is provided in accordance with the requirements of the CHIP Regulations.

Further information and relevant advice can be found in:

The Control of Substances Hazardous to Health Regulations 2002 (SI 2002: 2677).

COSHH Essentials: easy steps to control chemicals, HSG 193. HSE books. Control Guidance Sheets, which may be relevant to the particular conditions of use, can also be found in this publication.

The Dangerous Substances & Explosive Atmospheres Regulations 2002 (SI 2002: 2776).

The Manual Handling Operations Regulations 1992, (SI 1992:2793), The Stationery Office.

Chemical Warehousing: Storage of Flammable Liquids in Containers (HSG51), HSE Books.

Storage: Packaged Dangerous Substances HSG71, HSE. The Environmental Protection (Duty of Care)

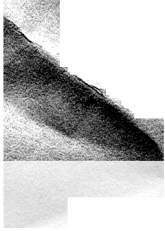
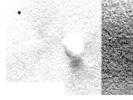
Regulations 1992 (SI 1992: 2839), TSO.

16. OTHER INFORMATION (continued)

A Guide to Working with Solvents (INDG 272), HSE.

16.04 Footnote

The information contained in this data sheet is based on the present state of knowledge and current national legislation. It provides guidance on health, safety and environmental aspects of the product and should not be construed as any guarantee of technical performance or suitability for particular applications.



4 2001 22

1
2
3

4