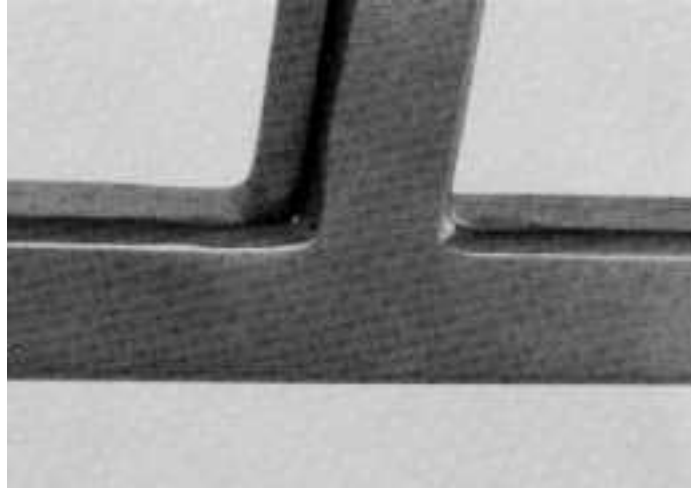


Guideline 1: Joint Finishes

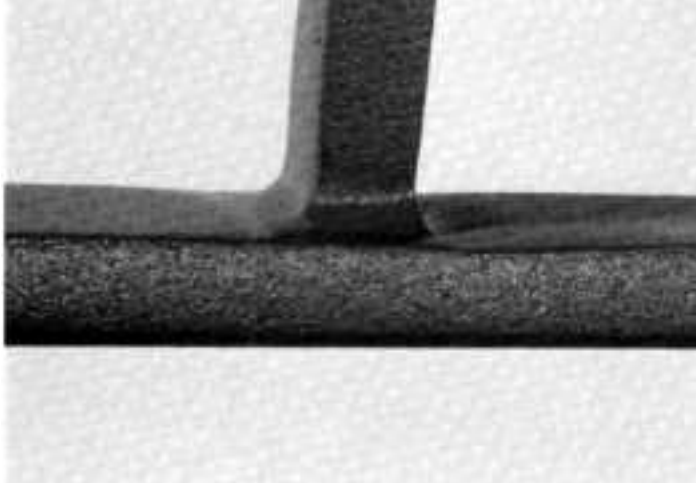
These voluntary guidelines were developed by the NOMMA Technical Committee, with strong input from the membership.

All samples shown are primed steel.

Square Tube

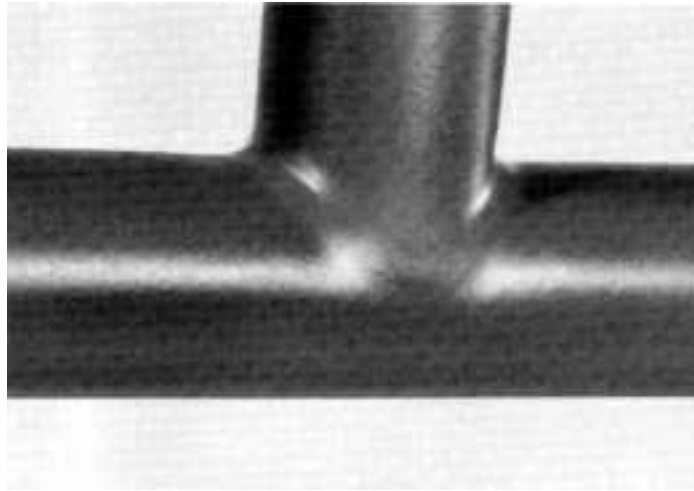


Square Solid

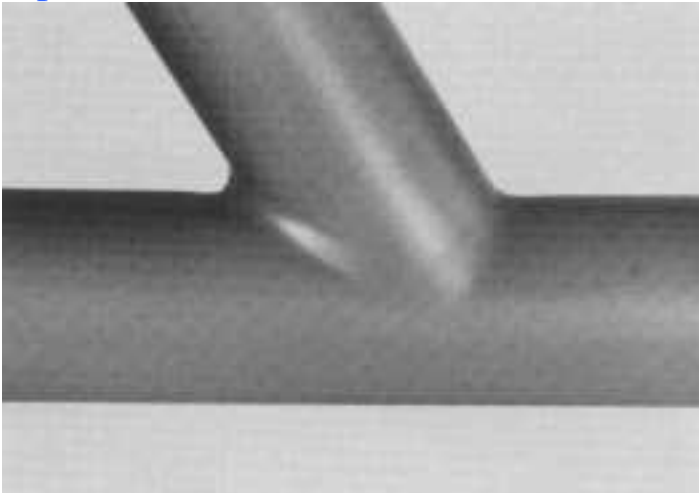


NOMMA's Joint Finish Guidelines were developed in 1994 to ensure quality and "apples to apples" bidding in the industry. Architects are encouraged to use the NOMMA guide when specifying jobs.

Pipe



Pipe Racked



If you are an architect, the NOMMA office will be glad to mail you one sample copy. Send your request to liz@nomma.org. Additional copies can be ordered on-line by going to NOMMA's [Publications Order Page](#).